

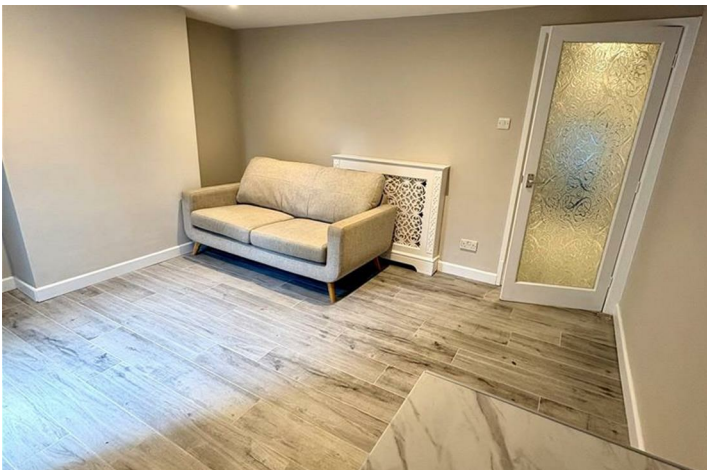
**55A Parchment Street, Winchester, SO23 8BA**  
**£1,100 Per Month**





55A Parchment Street, Winchester,  
£1,100 Per Month

PROPERTY DESCRIPTION BY Tanya Owens







## MORTGAGE ADVICE

### Across The Market Mortgages

An independent Mortgage brokerage offering expert advice from across the whole market. Whether you are a first-time buyer, home mover, remortgaging or buying a Buy-To-Let investment. Tristan can provide expert & reliable advice, in a clear jargon free language. Book a free consultation today.

E - [tristan@atmmortgages.com](mailto:tristan@atmmortgages.com) M - 07545320380

[www.atmmortgages.com](http://www.atmmortgages.com)

Energy Efficiency Rating		
	Current	Potential
Very energy efficient - lower running costs		
(85 plus) <b>A</b>		
(81-84) <b>B</b>		
(69-80) <b>C</b>		
(55-68) <b>D</b>		
(39-54) <b>E</b>		
(21-38) <b>F</b>		
(1-20) <b>G</b>		
Not energy efficient - higher running costs		
England & Wales EU Directive 2002/91/EC		

Tax Band: B



OPEN 7 DAYS

If you are considering selling your home  
please contact us today for your free  
no obligation valuation

**01962 462460**

IMPORTANT: we would like to inform prospective purchasers that these sales particulars have been prepared as a general guide only. A detailed survey has not been carried out, nor the services, appliances and fittings tested. Room sizes should not be relied upon for furnishing purposes and are approximate. If floor plans are included, they are for guidance only and illustration purposes only and may not be to scale. If there are any important matters likely to affect your decision to buy, please contact us before viewing the property.